

東京大学講義

2022.06.29

景観まちづくり × 人類生態 × 国際開発 × 文化芸術 = ??

Landscape & Planning × Human Ecology × International Development × Culture & Arts = ??

Harvard Graduate School of Design

Doctor of Design'25, MDes'21

EDAYA co-founder/director

山下彩香 Ayaka Yamashita

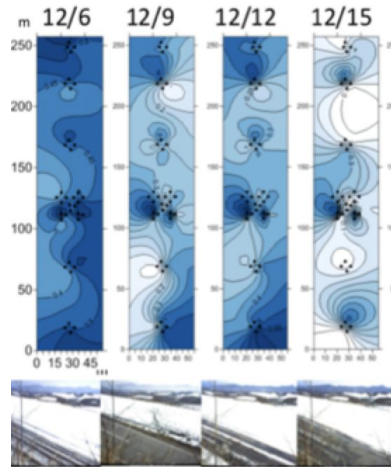


Researcher/ Producer/ Facilitator

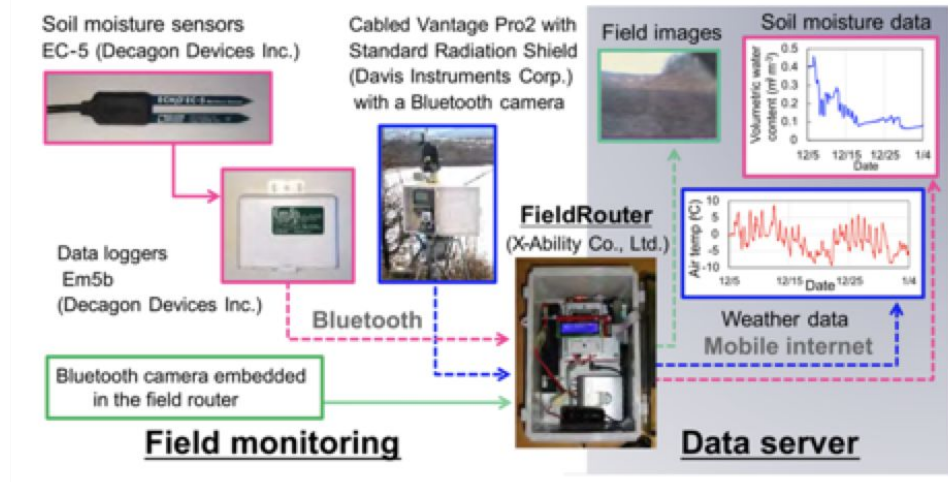
- Bachelor of Agriculture (International Sustainable Agriculture Development) and Master of Health Sciences (Human Ecology) from the University of Tokyo
>> Harvard Graduate School of Design (Master in Design Studies: Risk and Resilience/ Fulbright) >> Doctor of Design
- Arts & Cultural Organization “EDAYA” co-founder + International Development Consultant

Landscape & Planning × Human Ecology × International Development × Culture & Arts = ??

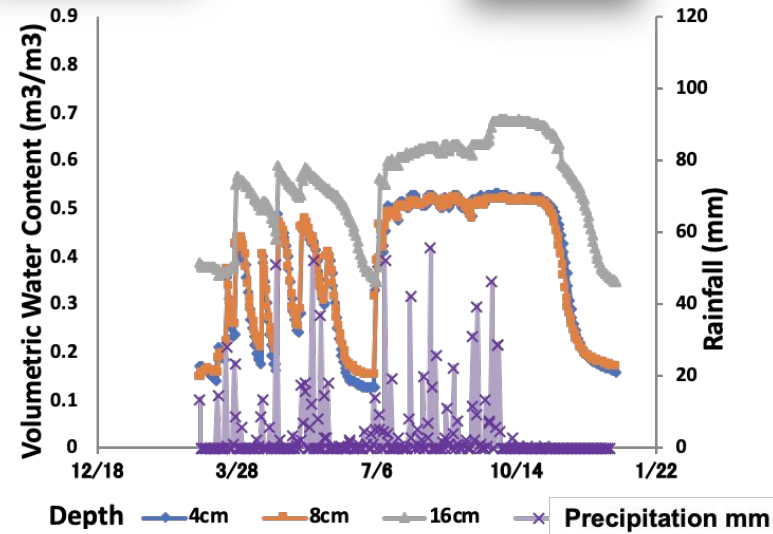
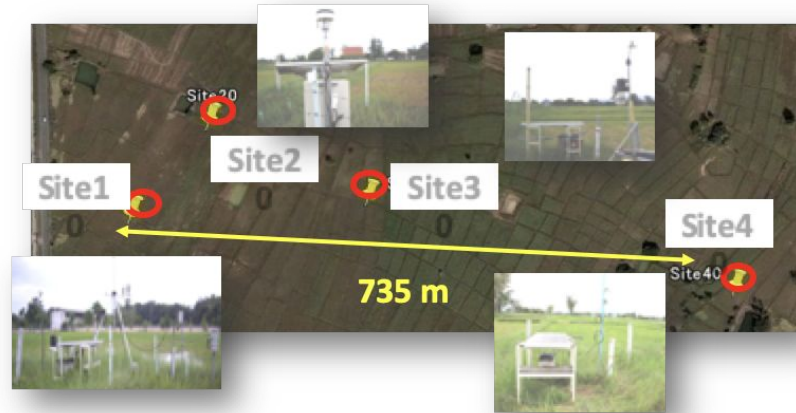
Landscape & Planning × Human **Ecology** × **International Development** × Culture & Arts = ??



“Multipoint soil moisture measurements in an agricultural field with a sensor network system using a Field Router”



/ Field network system which invented by lab members /



Landscape & Planning × Human **Ecology** × **International Development** × Culture & Arts = ??



Landscape & Planning × **Human Ecology** × **International Development** × Culture & Arts = ??

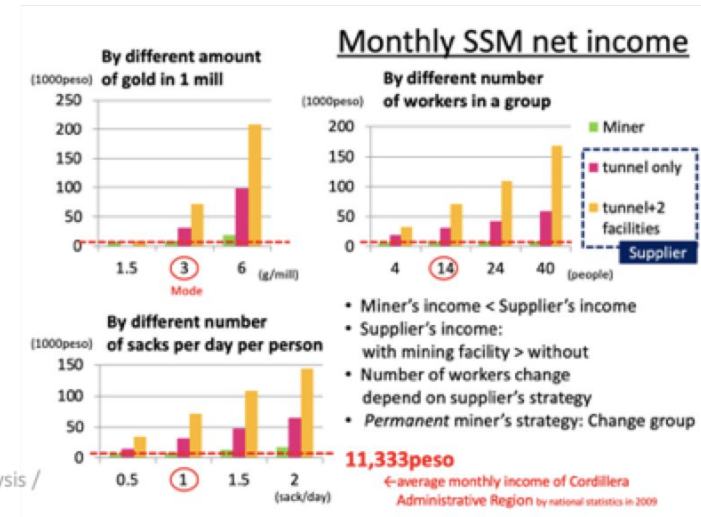
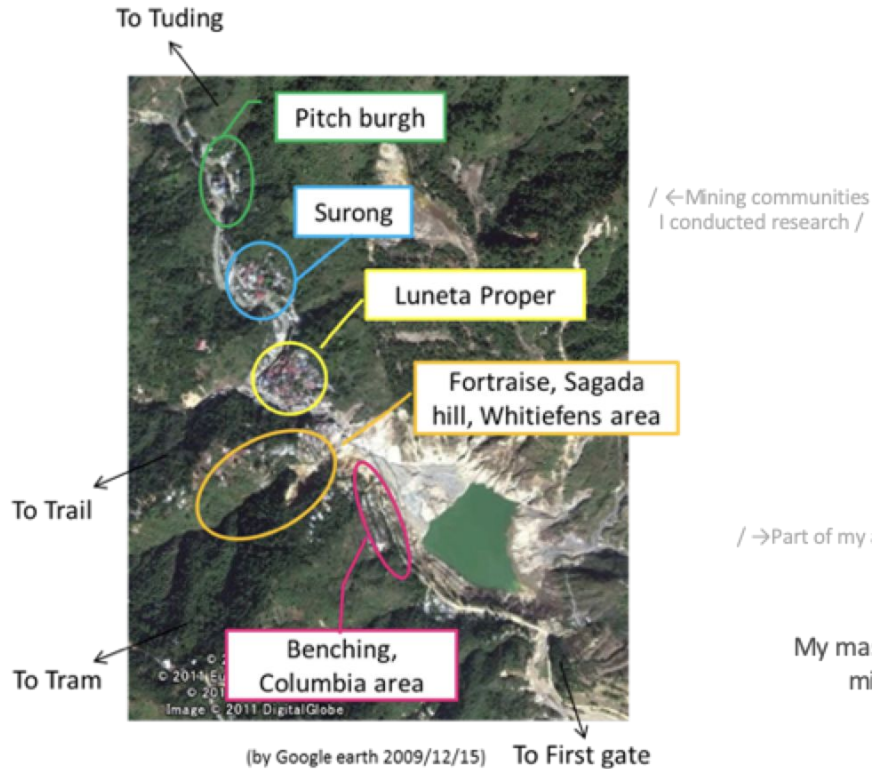


“UNESCO Creative City”



“Survival strategies of small-scale gold miners in Luneta, Benguet, Republic of the Philippines”





My master's thesis aimed to find out survival strategies of small- scale gold miners working in the Philippines who migrated from rural villages, by analyzing their socio-economic status.

Landscape & Planning × Human Ecology × **International Development** × **Culture & Arts** = ??

Tongatong

Tongatong is a percussion instrument and used to be played for accompanying healing rituals in Kalinga. It is preferred to be played with at least six people so that it can create harmony and dynamics through it is a simple stamping tube.

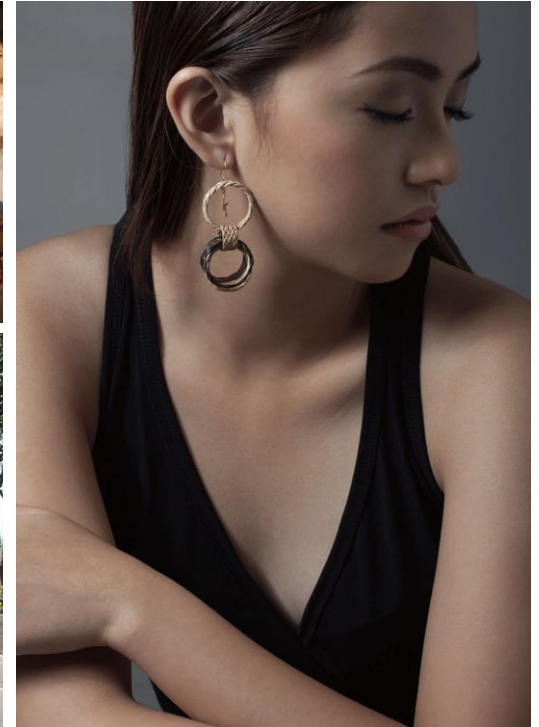


Music by Edgar Balansi Banasan
“Tongatong” (Fogga)



A creative bamboo
multi-disciplinary
collective, working in
design/art, education,
and community
development,

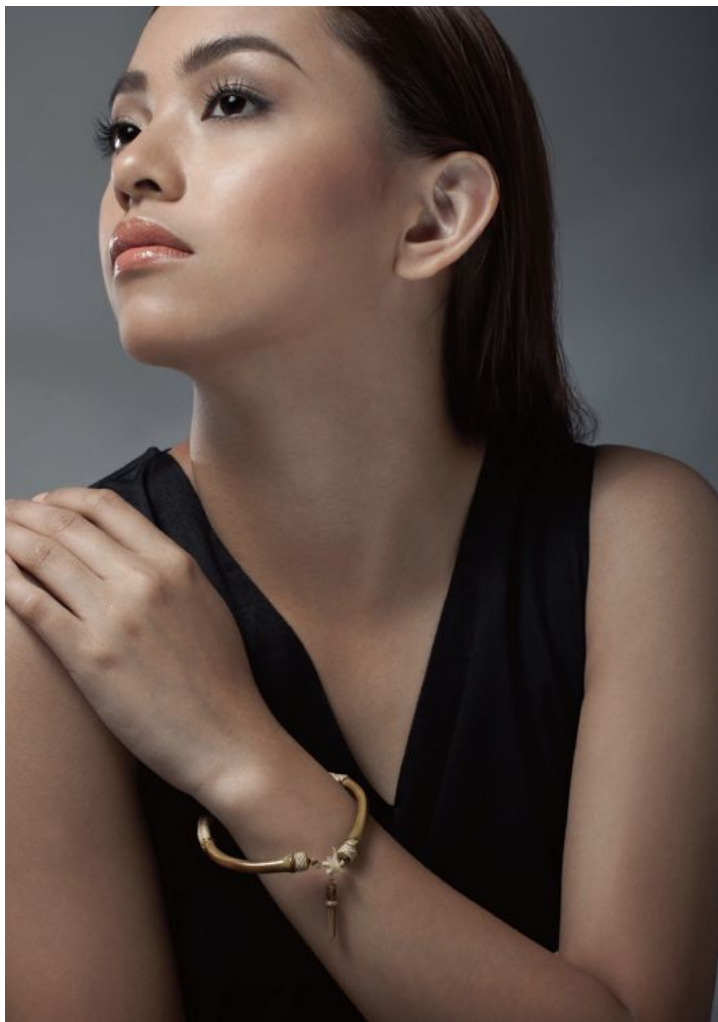
We redesign the relationship between
humans, nature, and society by embracing
local wisdom to co-create sustainable
futures.



Kalinga







Bamboo Jewelry

/ Social Products Award 2016 in Japan /

“Intangible to Tangible”



Comic book



National Textbook



Book



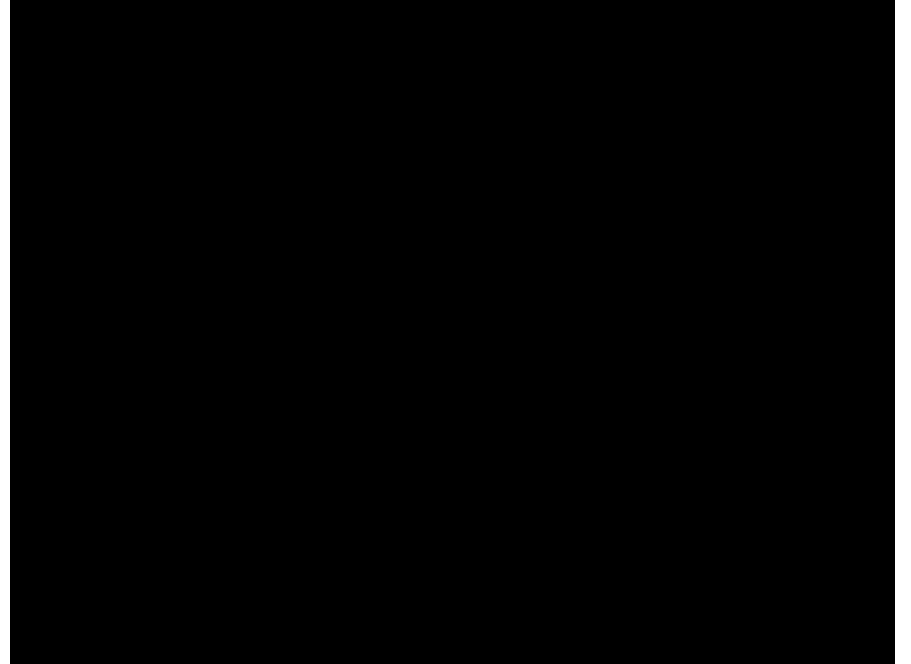
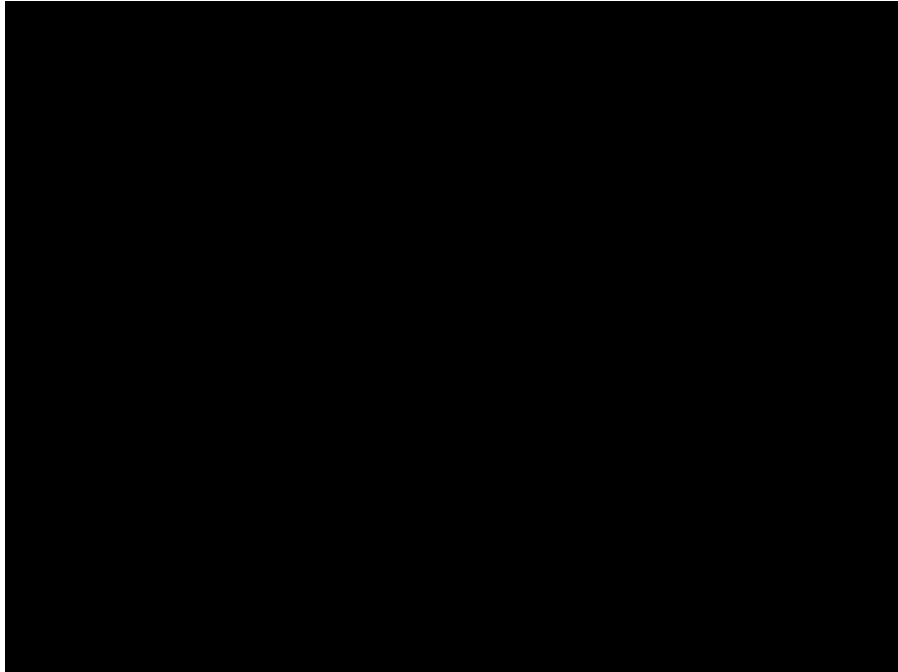
Landscape & Planning × Human Ecology × **International Development** × **Culture & Arts** = ??
+ rural



Cultural Exchange

/ Myanmar, Japan, India, Nepal, 2013- ongoing /





OE19038_Healing Through Bamboo Music
International Open Elective 2019
National Institute of Design (India)



Japan: Cocoon chair making



Japan: Music Festival Stage making



Japan: Wellness Space making



Bamboo Glocal Village is a workshop module that motivates participants to rediscover their culture and encourage innovation by creating miniature bamboo works for our virtual community that brings together different bamboo cultures from all over the world.

東京大学多文化共生・統合人間学プログラム (IHS) × トヨタ財団

集中講義

Intensive Lectures and Discussion
at the University of Tokyo Integrated Human Sciences Program for Cultural Diversity (IHS)
in collaboration with the Toyota Foundation International Grant Program

国際協働プロジェクトを 支える／実施する倫理と論理

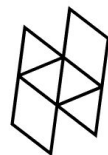
Ethics and Logics of International Collaborative Projects

報告書
Report

2022 年 6 月
June, 2022



東京大学大学院博士課程教育リーディングプログラム
多文化共生・統合人間学プログラム
Integrated Human Sciences Program
for Cultural Diversity



**Harvard University
Graduate School of Design**

Landscape & **Planning** × Human Ecology × **International Development** × **Culture & Arts** = ??

Composing Soundscapes for Social Integration:

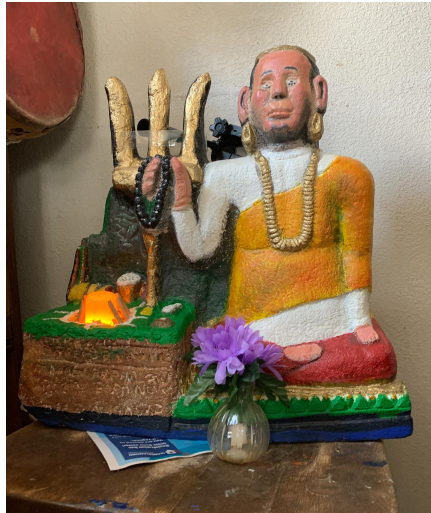
Psychogeography of Bhutanese refugee elders
in Worcester, Massachusetts



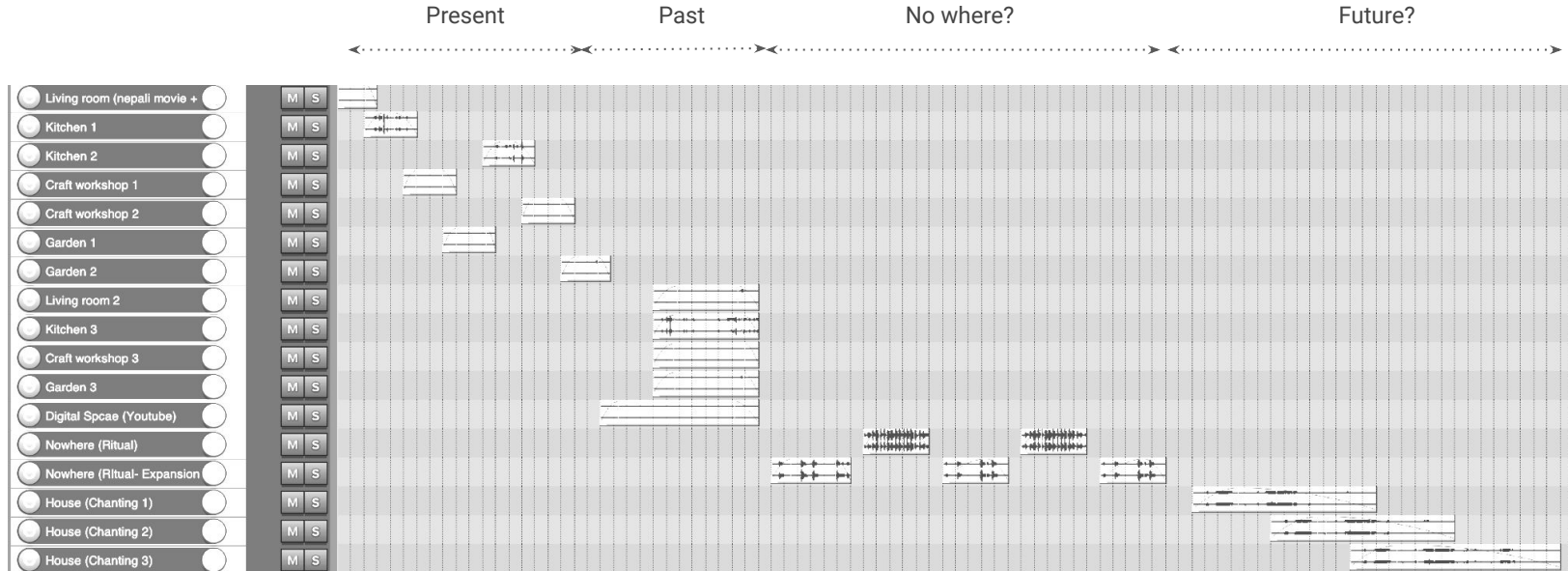
Door of Bhutanese Refugee house



Most of Bhutanese Refugees live in the three-decker apartment buildings.



Composition Process



Soundmark

Soundmark

Sound Object

Ensounding body

Assemblage

Assemblage

Distortion

Overlay

Panning

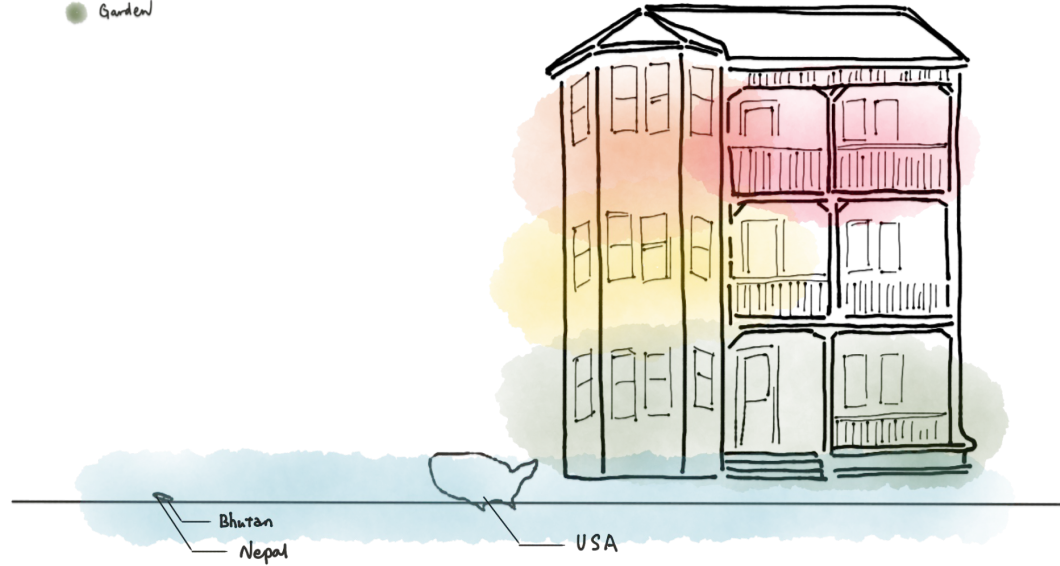
Volume

Repetition

Volume

Sounds from

- Living room
- Kitchen
- Crafts space
- Garden
- Digital devices
- Rituals
- Chanting



Soundscape composition & Notation

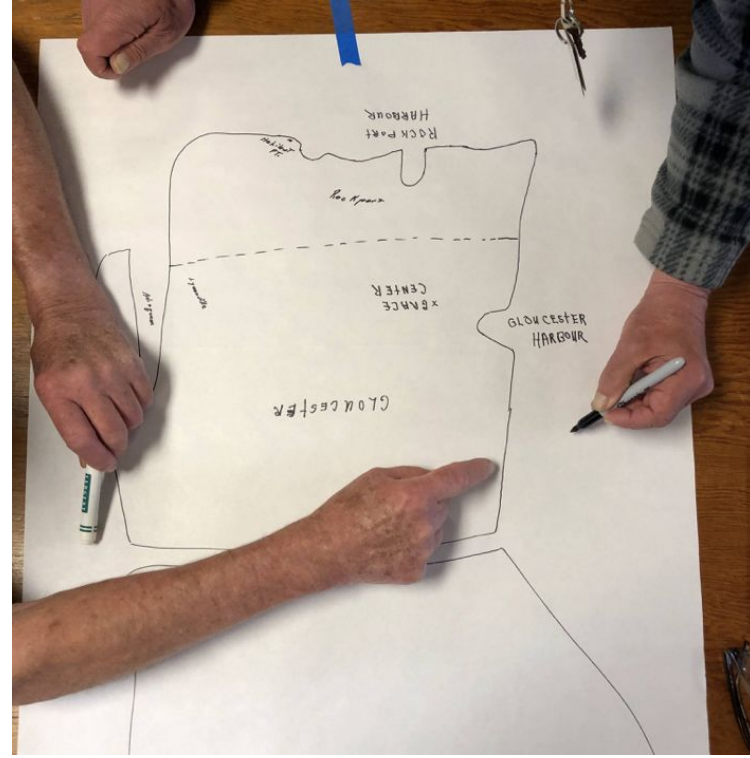
Landscape & Planning × **Human Ecology** × International Development × Culture & Arts = ??



The logo consists of two horizontal lines that are connected by a diagonal line, forming a stylized 'V' or 'Z' shape. The text 'CRITICAL LANDSCAPES' is positioned to the left of the diagonal line, and 'DESIGN LAB' is positioned to the right of the diagonal line.

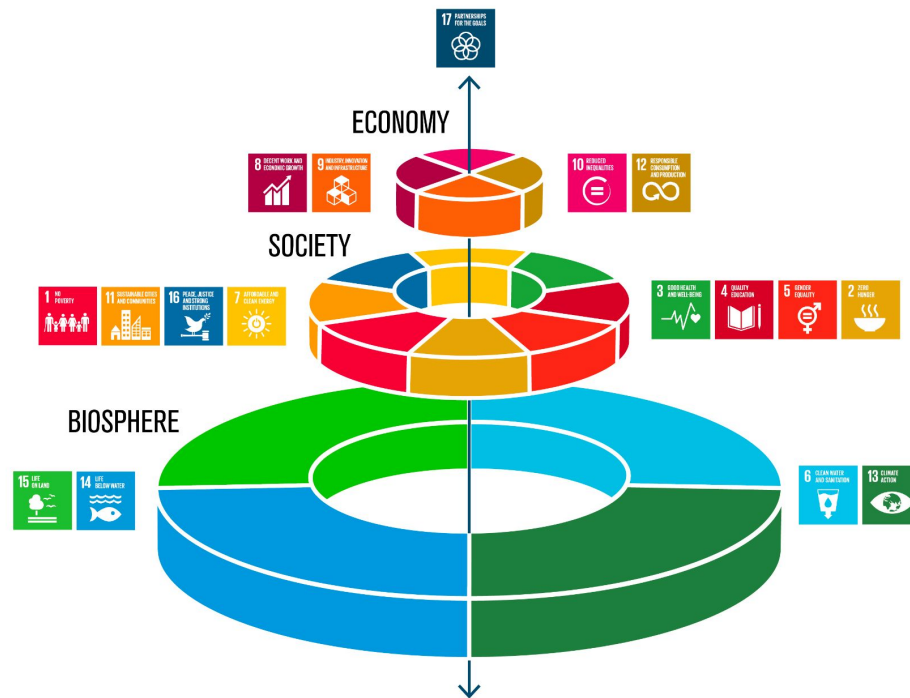
**CRITICAL
LANDSCAPES**

**DESIGN
LAB**



Landscape & Planning × Human Ecology × International Development × Culture & Arts = ??

Sounds of Indigenous Urbanism: Constructing Sonic Cartography
for Climate-Resilient Indigenous Cities in Southeast Asia





Thank you for listening!

Presented by Ayaka Yamashita ayamashita@gsd.harvard.edu
@ayamashita24 @edayya-arts